

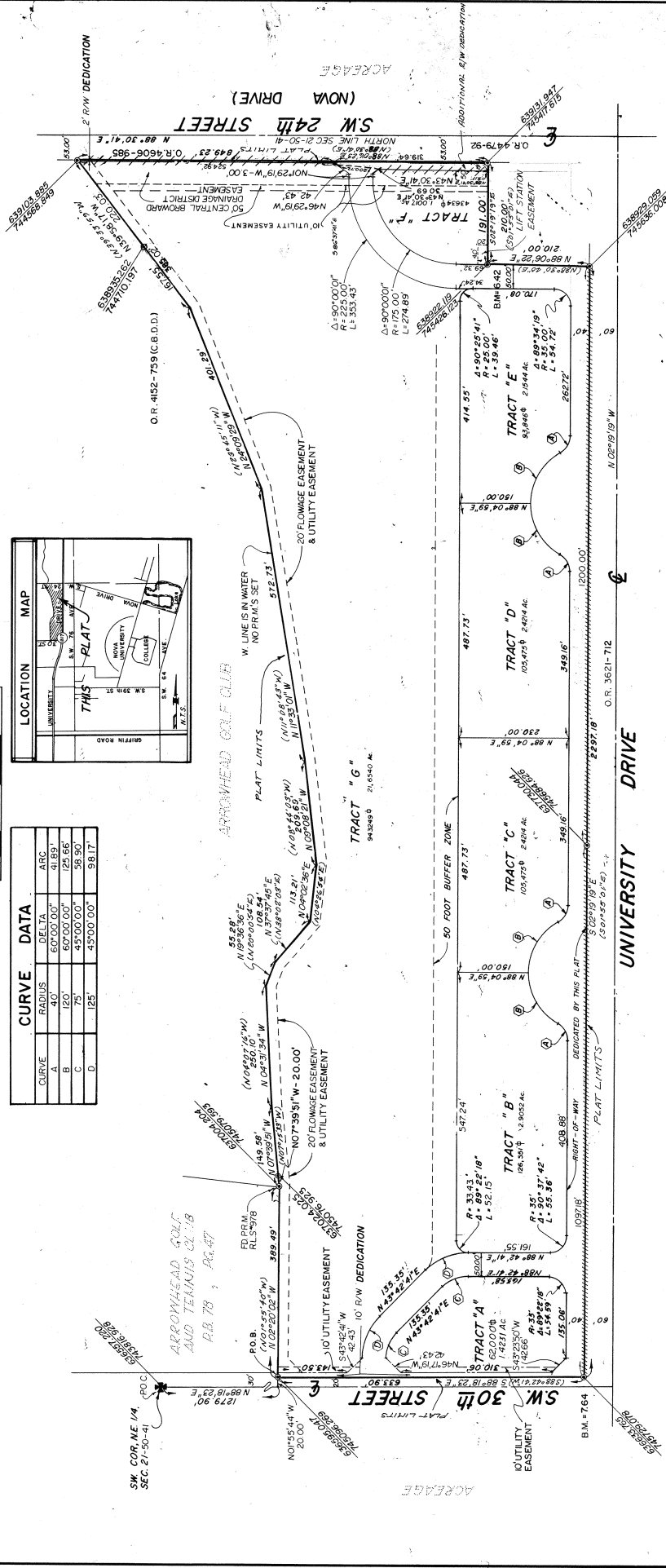
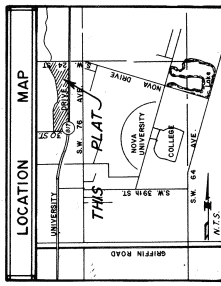


# ARROWHEAD GOLF AND TENNIS CLUB PHASE III

A PORTION OF THE NORTHEAST 1/4 OF SECTION 21, TOWNSHIP 50 SOUTH, RANGE 41 EAST  
TOWN OF DAVIE COUNTY OF BROWARD STATE OF FLORIDA



CURVE	RADIUS	DELTA	ARC
A	40'	60°00'00"	41.89'
B	120'	60°00'00"	125.56'
C	75'	45°00'00"	58.50'
D	125'	45°00'00"	98.17'



- NOTES:**
- THE 50 FOOT BUFFER ZONE INDICATED HEREON IS TO BE MAINTAINED AND SHALL NOT LIMIT PROXYSTAIN ACCESS AND EGRESS BETWEEN TRACT G AND TRACTS B, C, D, AND E.
  - AROUND ANY AND ALL INTERNAL LAKES.
  - THERE SHALL BE AN ENTITY PRESERVED TO MAINTAIN ALL WATERWAYS WITHIN THIS PLATTED AREA AS DICATED BY C.B.D.O. AND THIS ENTITY SHALL BE PERMANENT REFERENCE MONUMENT (M) NO. III (MISC. RB 5-9), STATE PLANE COORDINATES BASED ON SAME. BEARINGS IN PARENTSHEETS (1) ARE BASED ON QUICQUAM CURVE (A.E. 6940-428 P.C.E.) (301-555105).
  - BEARINGS ARE BASED ON STONER/HEITH RESURVEY.
  - BEARINGS IN PARENTSHEETS (1) ARE BASED ON QUICQUAM CURVE (A.E. 6940-428 P.C.E.) (301-555105).
  - HHHHH-DENOTES NON ACCESS LINE.
  - TOTAL R/W DEDICATION= 190,462' - 43724 ACRES

MID SOUTH ENGINEERING COMPANY  
CONSULTING ENGINEERS & PLANNERS  
233 COMMERCIAL BLVD. LAUDERDALE-BY-SEA, FT. LAUDERDALE, FLA. 33308